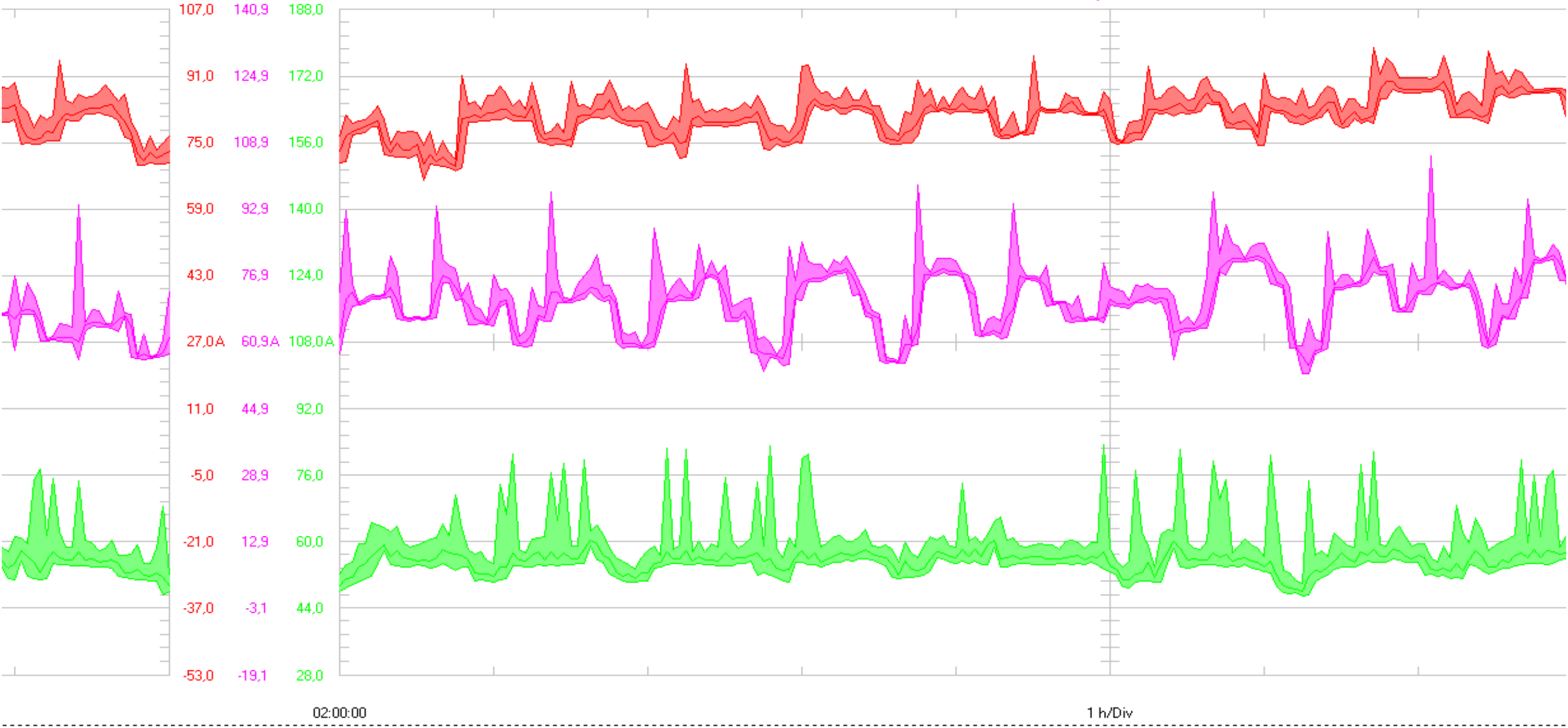
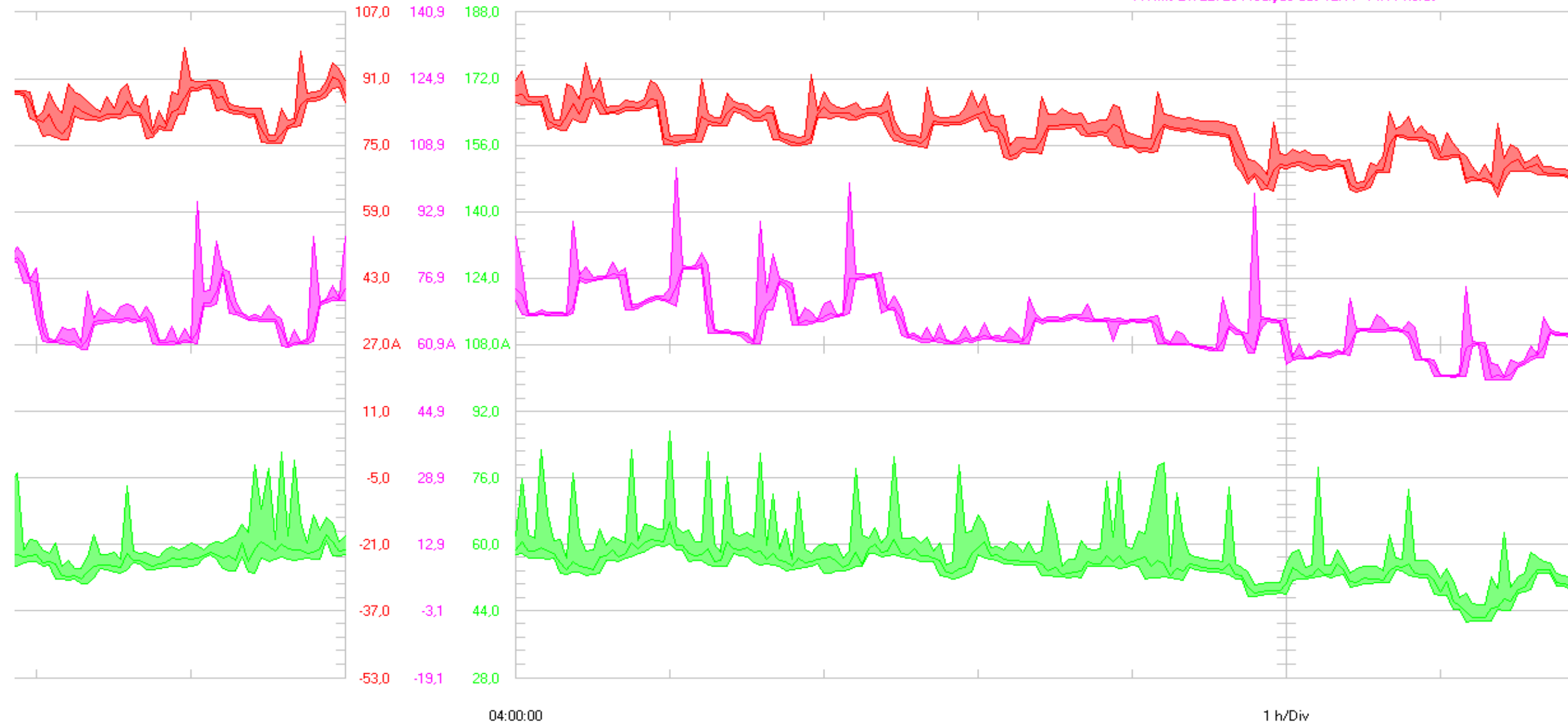
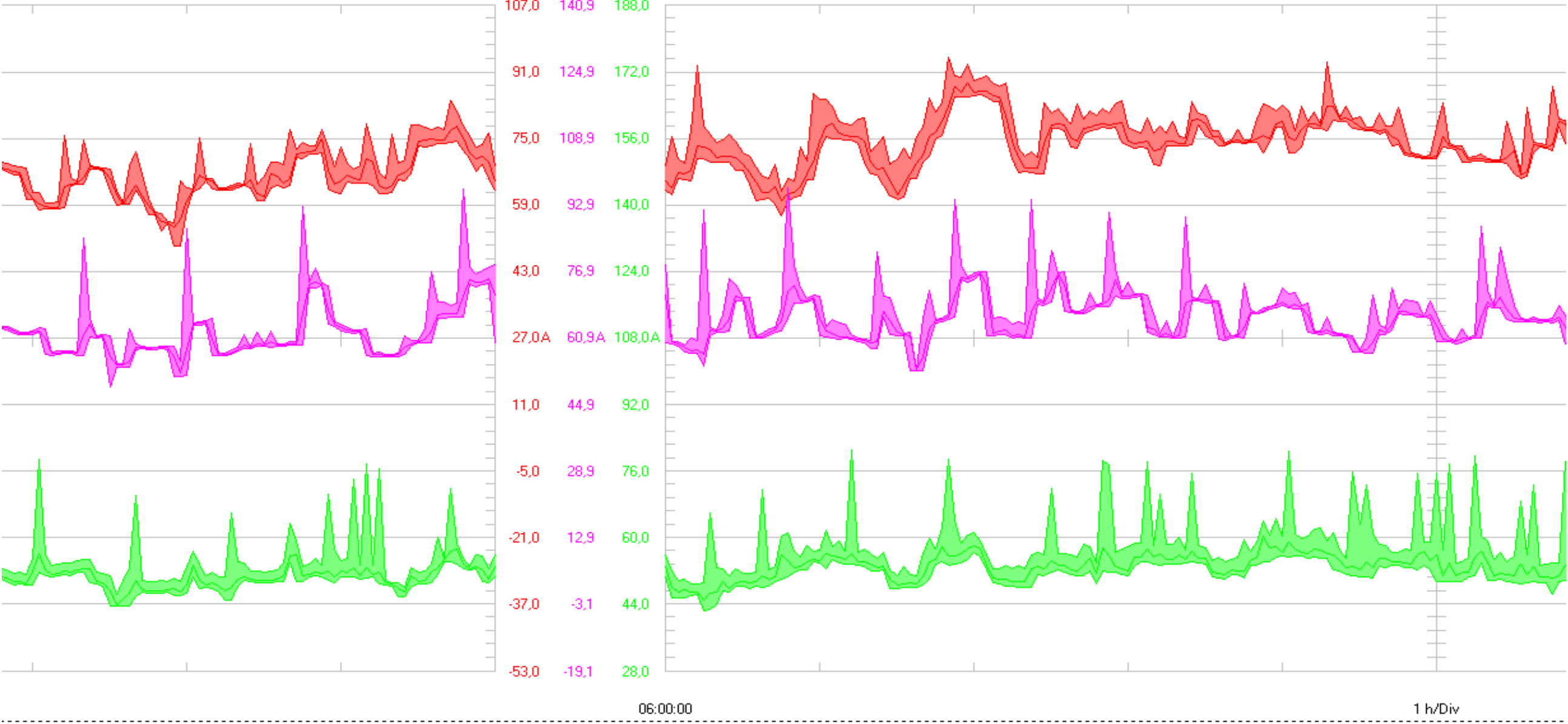


A Rms L1/L27L3 Medição das 10:11- 12:11 horas

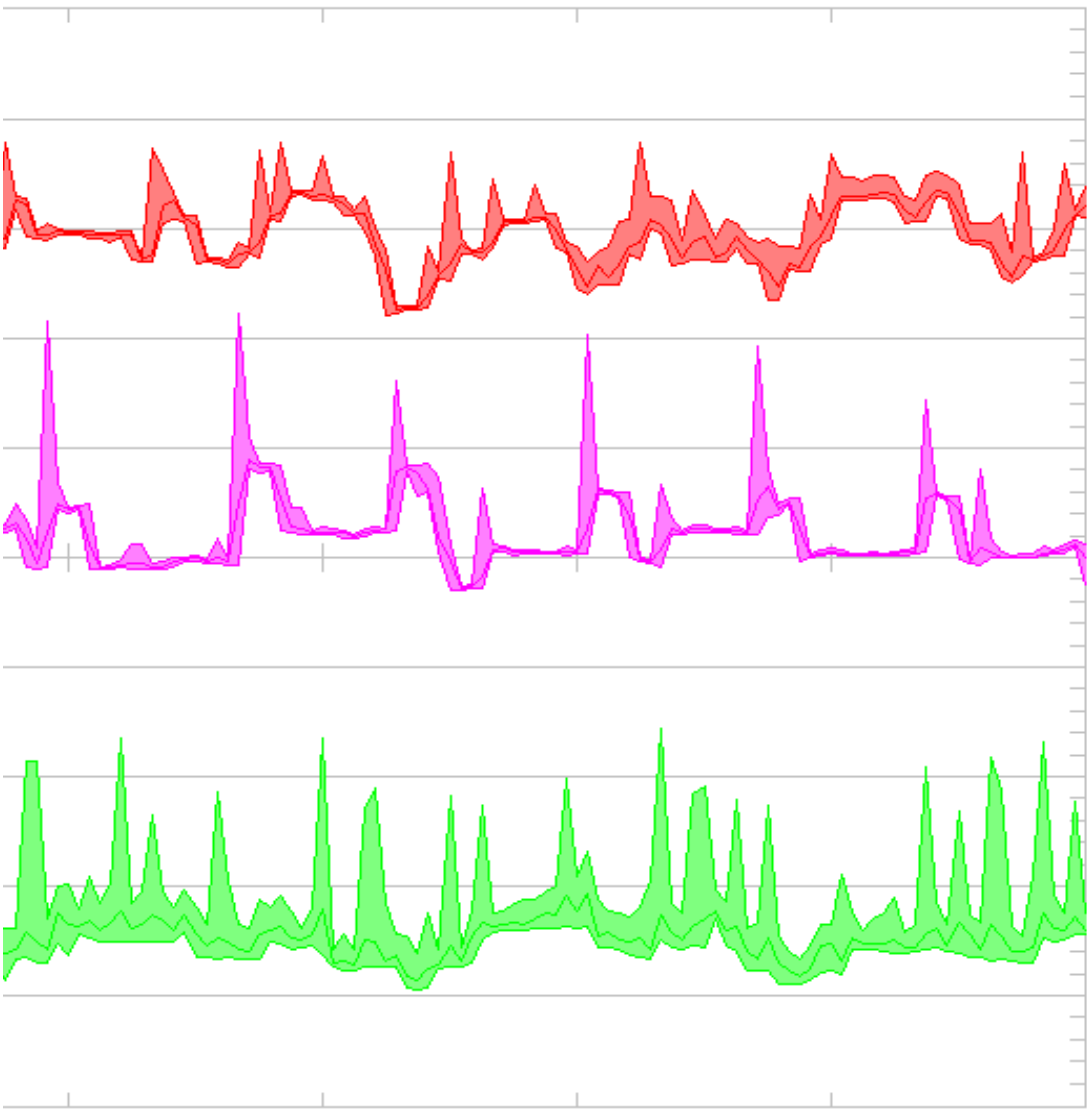


A Rms L1/L27L3 Medição das 12:11- 14:11 horas



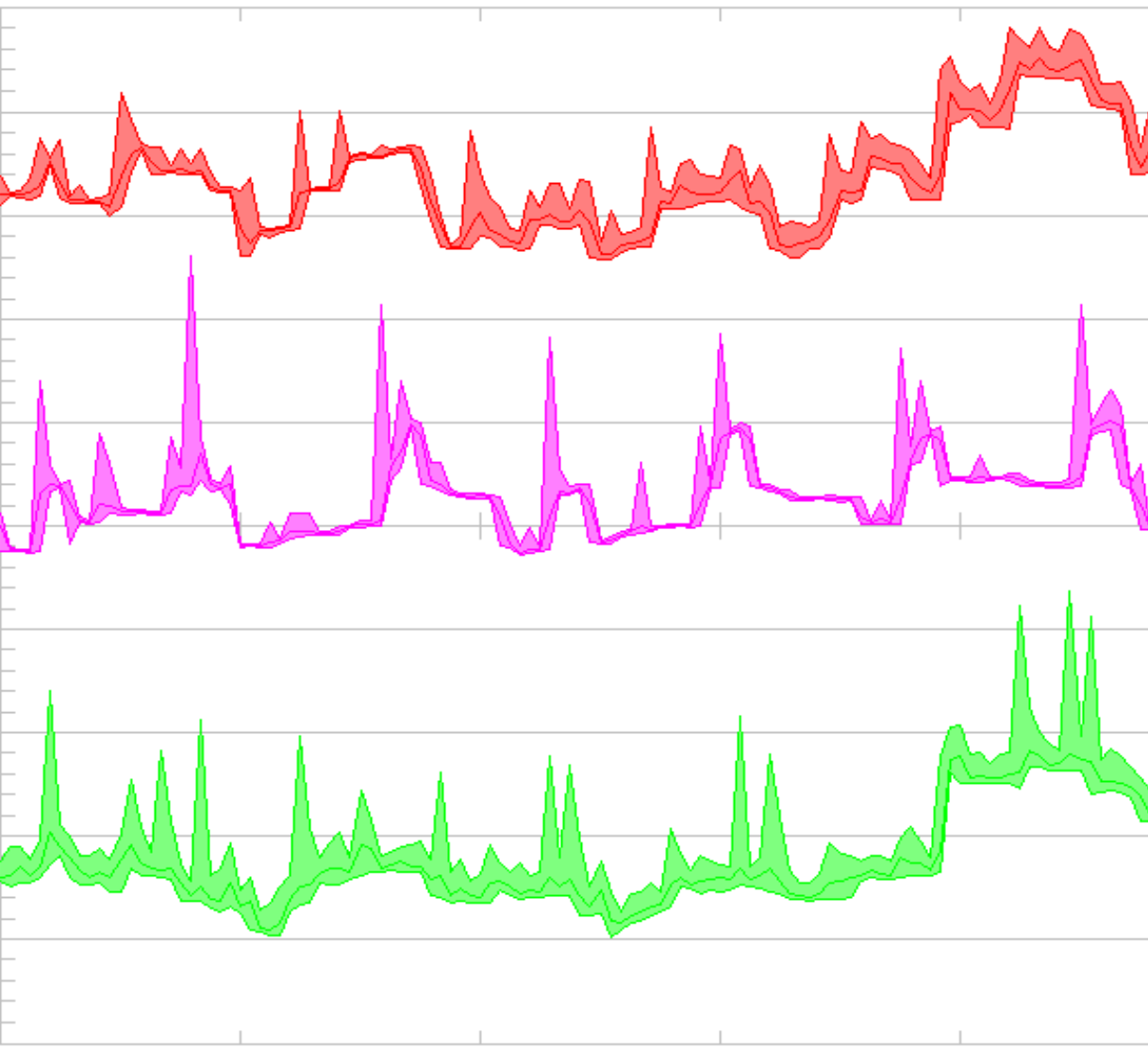


horas



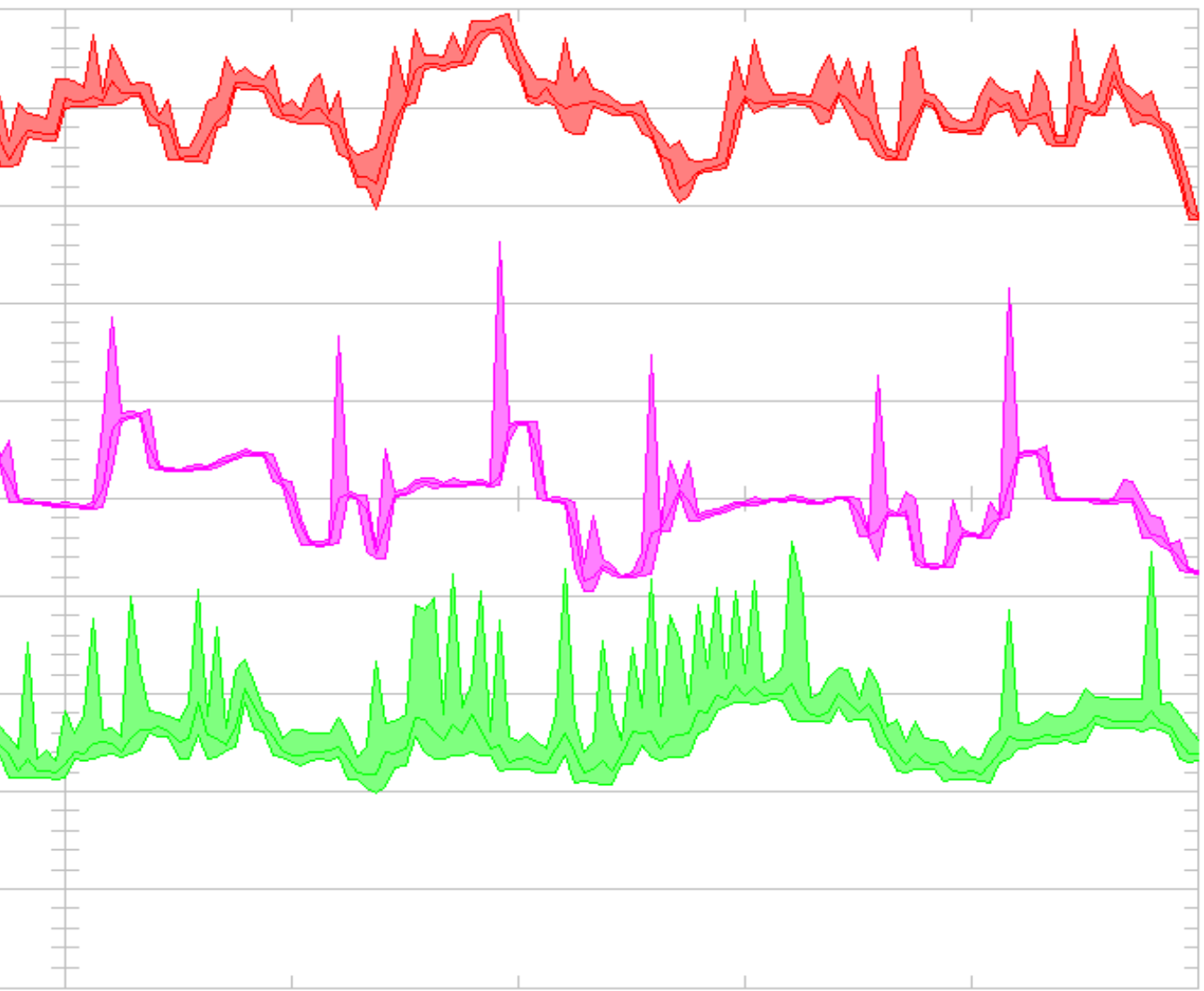
107,0	140,9	188,0
91,0	124,9	172,0
75,0	108,9	156,0
59,0	92,9	140,0
43,0	76,9	124,0
27,0A	60,9A	108,0A
11,0	44,9	92,0
-5,0	28,9	76,0
-21,0	12,9	60,0
-37,0	-3,1	44,0
-53,0	-19,1	28,0

A Rms L1/L27L3 M



08:00:00

Medição das 16:11- 18:11 horas



107,0	140,9	188,0
91,0	124,9	172,0
75,0	108,9	156,0
59,0	92,9	140,0
43,0	76,9	124,0
27,0A	60,9A	108,0A
11,0	44,9	92,0
-5,0	28,9	76,0
-21,0	12,9	60,0
-37,0	-3,1	44,0
-53,0	-19,1	28,0

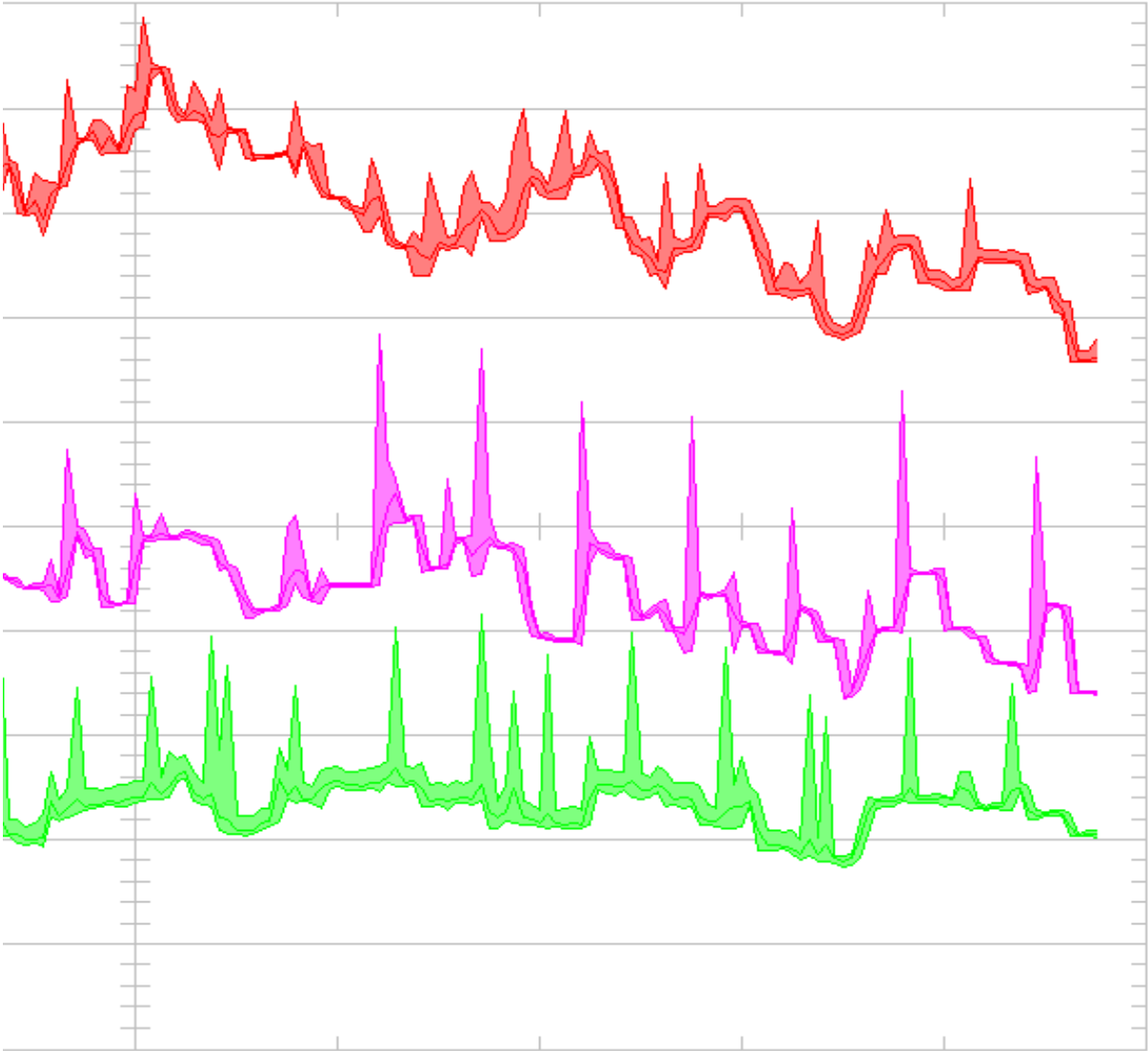
1 h/Div

A Rms L1/L2'



09:42:00

..27L3 Medição das 18:11- 19:51 horas



Datablock		
Name	= A Rms A/L1	A Rms B/L2
Date	= 14-03-2012	14-03-2012
Time	= 08:11:44	08:11:44
Y Scale	= 16 A/Div	16 A/Div
Y At 50%	= 27,0 A	60,9 A
X Scale	= 1 h/Div	1 h/Div
X At 0%	= 09:42:00	09:42:00
X Size	= 234 (1399)	234 (1399)
Maximum	= 106,2 A	105,8 A
Minimum	= 49,1 A	34,4 A
Name	= A Rms C/L3	
Date	= 14-03-2012	
Time	= 08:11:44	
Y Scale	= 16 A/Div	
Y At 50%	= 108,0 A	
X Scale	= 1 h/Div	
X At 0%	= 09:42:00	
X Size	= 234 (1399)	
Maximum	= 100,8 A	
Minimum	= 36,0 A	