



Desde Since 1958

www.jsl-online.net

inway
KANAL SYSTEM

**Calha Técnica para
Instalação Eléctrica**

**Canal para
Mecanismos**

**Truncking for Electric
Installations**

**Goulotte Technique pour des
Instalations Electriques**

Ref. 10054B



Estética e design moderno

Universal: aceita todos os
tipos de aparelhagem 45x45

Completa gama de acessórios
modulares e de ângulos variáveis
adaptados às imperfeições das
paredes

Diseño moderno

Universal: acepta todo tipo de
aparellaje 45x45

Una gama completa de accesorios
modulares y ángulos variables
adaptados a las imperfecciones de
las paredes

Aesthetics and modern design

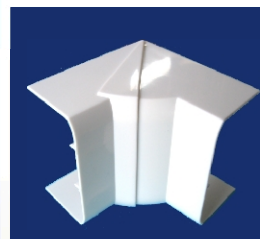
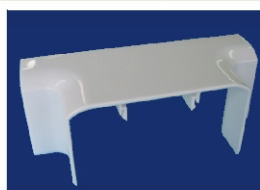
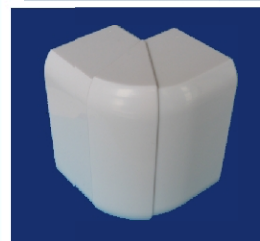
Universal: it accepts all kinds
of 45x45 switches and sockets

Complete range of modular and
variable accessories adapted to
the wall defects

Estetique et design moderne

Universelle: elle accepte
toutes les genres
d'appareillage 45x45

Gamme complete d'accessoires
modulaires et d'angles
variables adaptés aux
imperfections des murs





Desde Since 1958

inway
KANAL SYSTEM

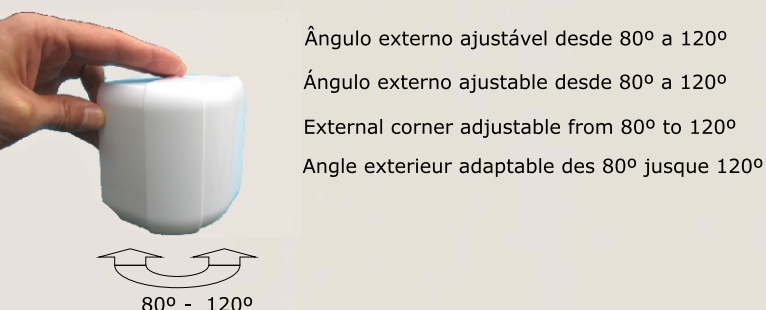
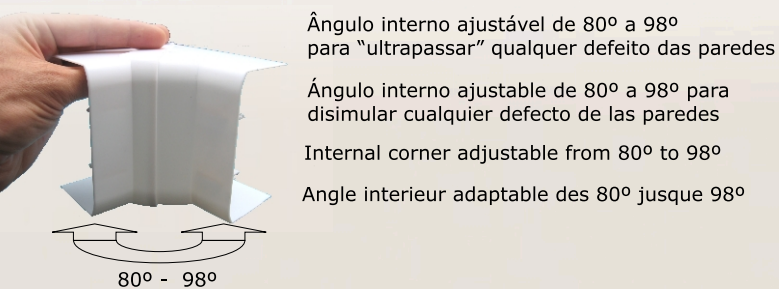
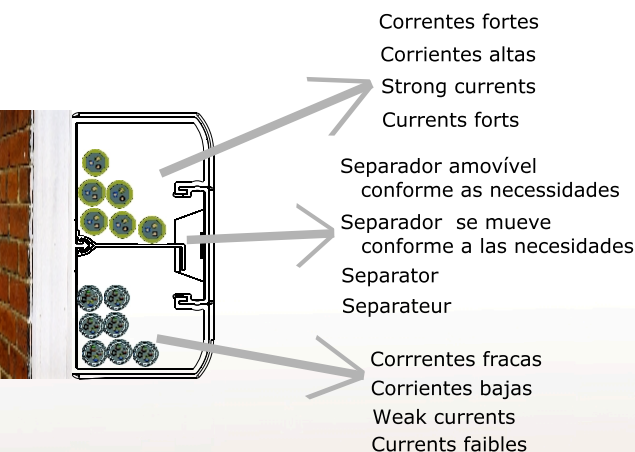
Calha técnica para instalação elétrica, aparelhagem de manobra, redes estruturadas e telecomunicações em ambientes industriais e domésticos: ("one way or two ways") de acordo com a Norma EN50085-2-1 e com os regulamentos de segurança de instalações elétricas RTIEBT e com o regulamento de telecomunicações ITED

Canal para instalación eléctrica, mecanismos, redes de telecomunicaciones en ambientes industriales y domésticos ("one way or two ways"), de acuerdo con la norma EN50085-2-1 y con los reglamentos de seguridad en las instalaciones eléctricas RTIEBT y de telecomunicaciones ITED

Trunking for electric installations, switches and sockets, structured networks and telecommunications in domestic and industrial ambiances ("One way or two ways"), conform with Norm EN 50085-2-1 and with the contents of the electric installation safety and telecommunications rules

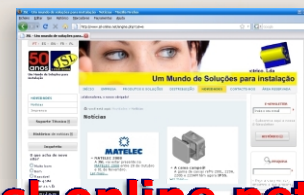
Goulotte technique pour des installations électriques, appareillage, reseaux de cablage structurée et telecommunications dans des ambients domestiques ou industrielles ("One way or two ways"), conforme la Norme EN 50085-2-1 et les reglements de sécurité des installations électriques et telecommunications

Ref. 10054B



Acessórios de união da tampa e união da base independentes
Accesorios de unión de tapa y unión de la base independientes
Independent accessories for the junction of the base and cover
Accessoires independents pour la joint de la base et de la couvercle

Um Mundo de Soluções para Instalação
A World of Solutions for Installers
Un Mundo de Soluciones para Instalación
Un Monde de Solutions pour l'Installation



www.jsl-online.net



JSL - Material Eléctrico, S.A.
Sede/ Sede/ Headquarters/ Siège Social
Rua Mário Castelhana, nº3
Zona Industrial Queluz de Baixo
Apartado 12, 2746 – 801 Queluz - Portugal
T (+351) 21 434 46 70 F (+351) 21 435 31 50
M (+351) 91 997 50 67/ 93 490 06 90/ 96 273 67 09
info@jsl-online.net www.jsl-online.net

Distribuidor/ Distribuidor/ Distributor/ Distributeur JSL: